

# Pride Surveys Questionnaire for Grades 6 thru 12 Year-to-Year

2015-16 Atlantic Prevention Resources

Absecon, NJ

January 21, 2016



PRIDE SURVEYS  
2140 Newmarket Pkwy. #116  
Marietta, GA 30067  
☎ 800.279.6361  
☎ 770.726.9327  
[www.pridesurveys.com](http://www.pridesurveys.com)

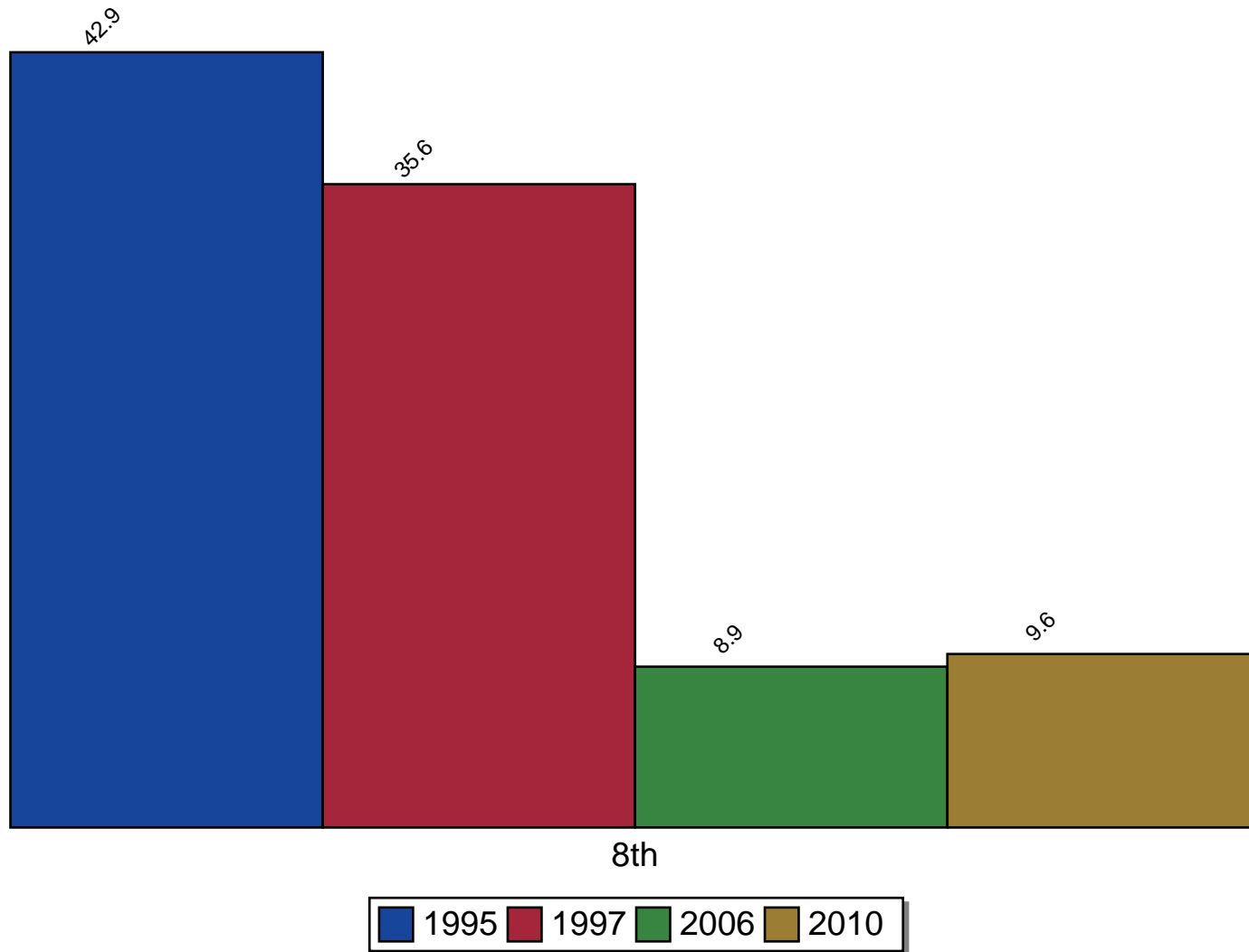
## Contents

<b>1 Annual &amp; Monthly Use Across Years</b>	<b>1</b>
<b>2 Perceived Risk of Use</b>	<b>24</b>
<b>3 Availability Across Years</b>	<b>32</b>

## 1 Annual & Monthly Use Across Years

The first set of graphs present data on the frequency of use. For each drug, there is a chart reporting *Annual Use* (i.e. any use within the past year) and *Monthly Use* (i.e. use at least once a month).

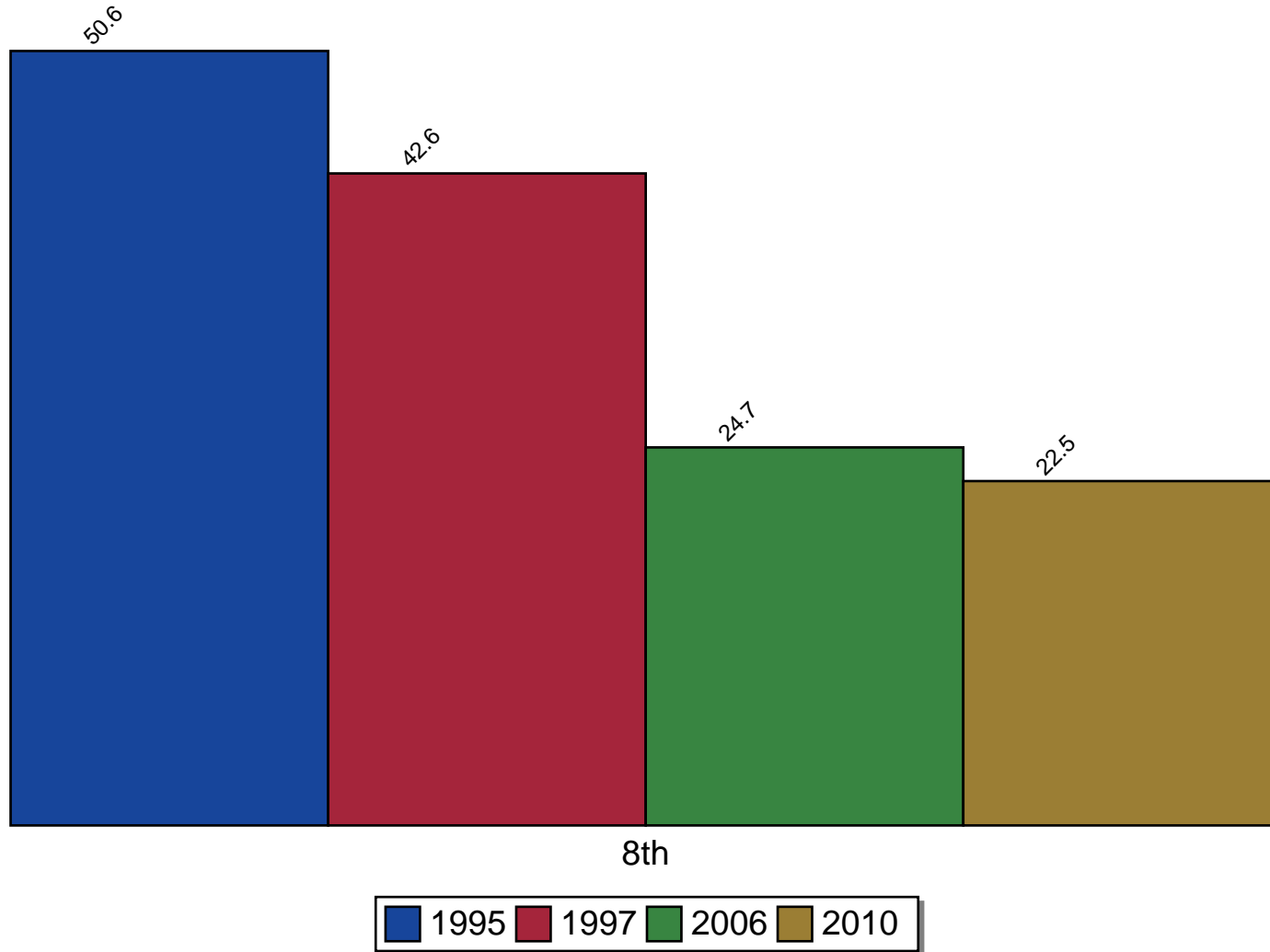
# Annual Use of Cigarettes



Source: Pride Survey

Figure 1: Annual Use of Cigarettes

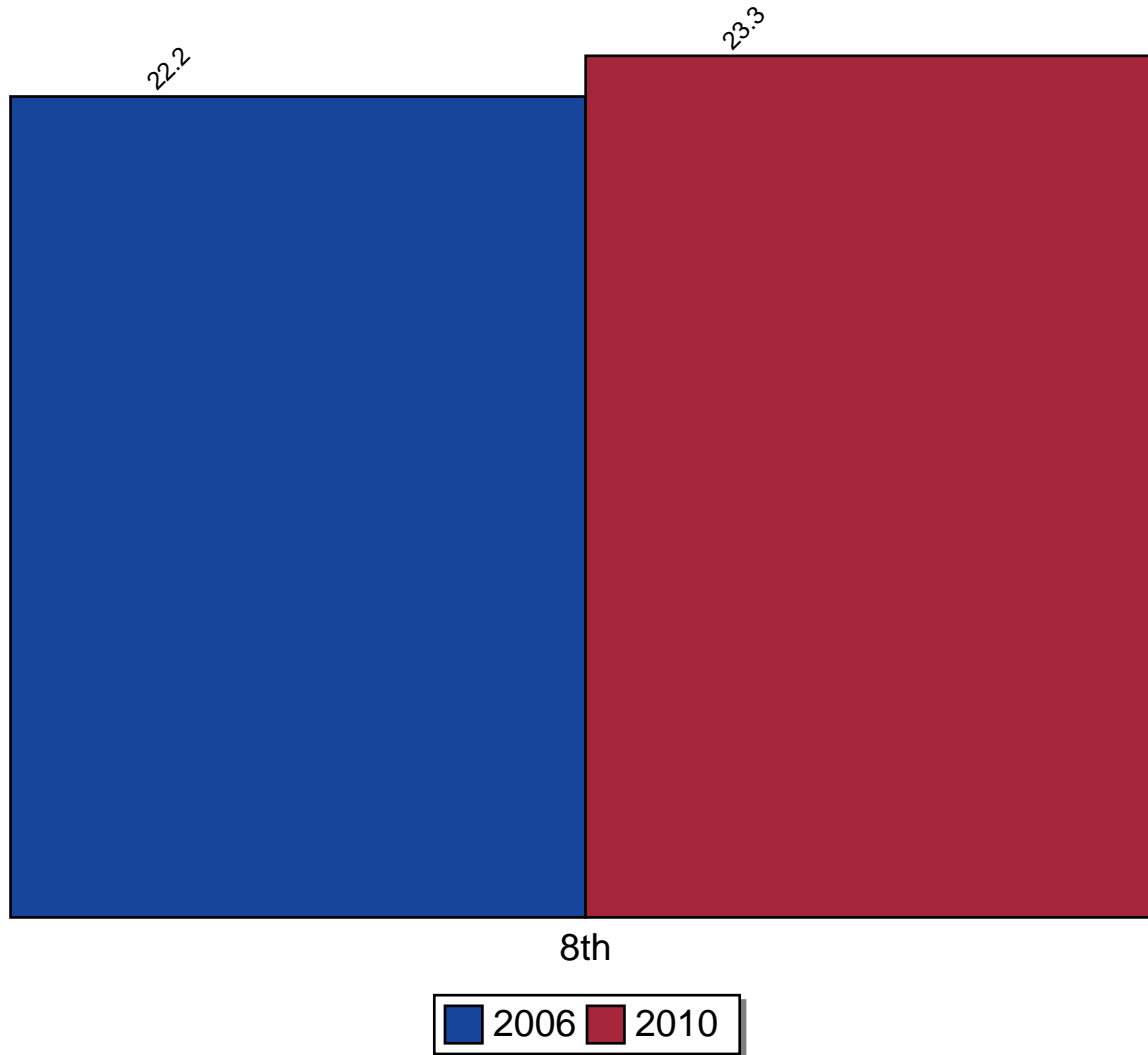
# Annual Use of Beer



Source: Pride Survey

Figure 2: Annual Use of Beer

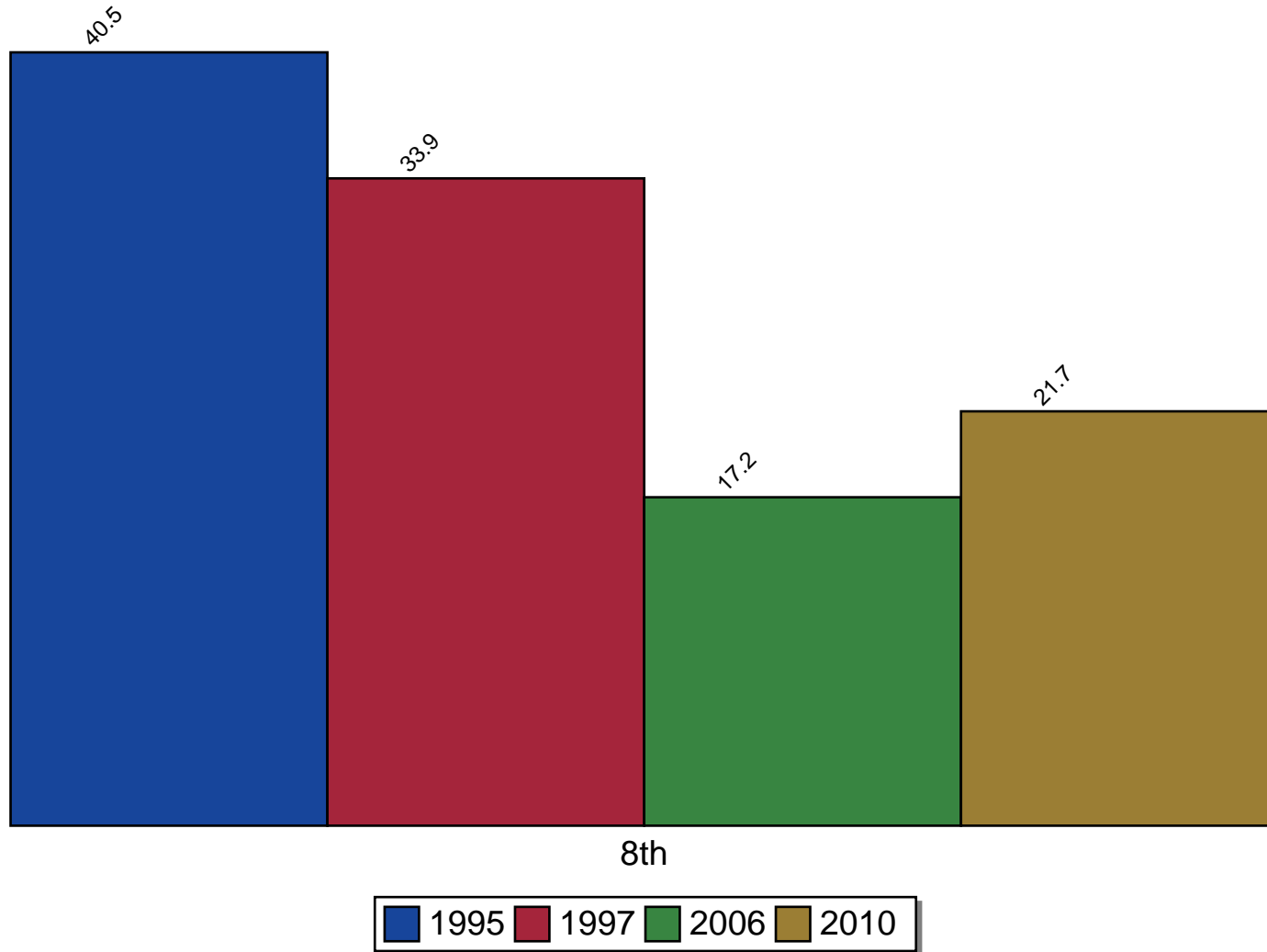
# Annual Use of Wine Coolers



Source: Pride Survey

Figure 3: Annual Use of Wine Coolers

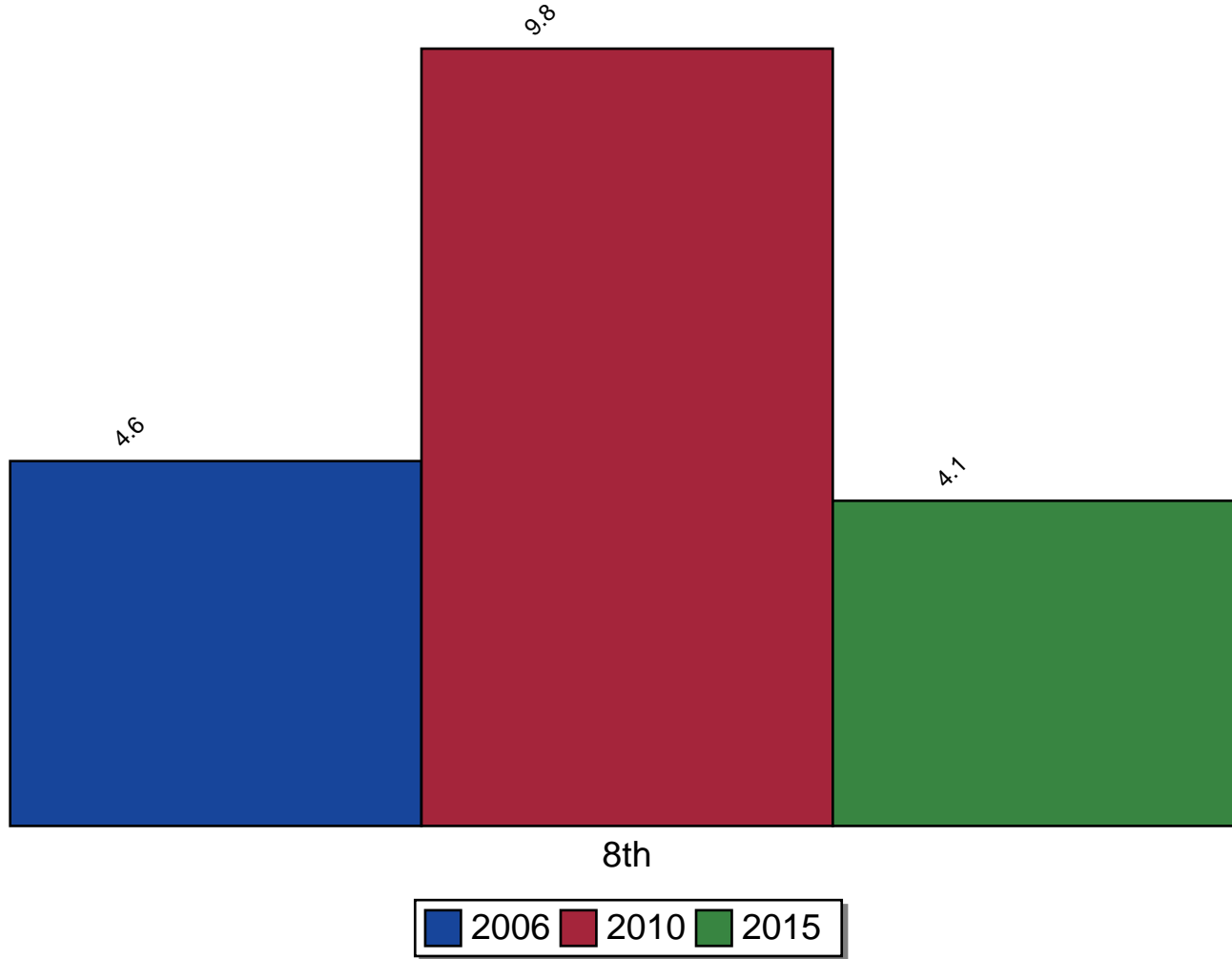
# Annual Use of Liquor



Source: Pride Survey

Figure 4: Annual Use of Liquor

# Annual Use of Marijuana

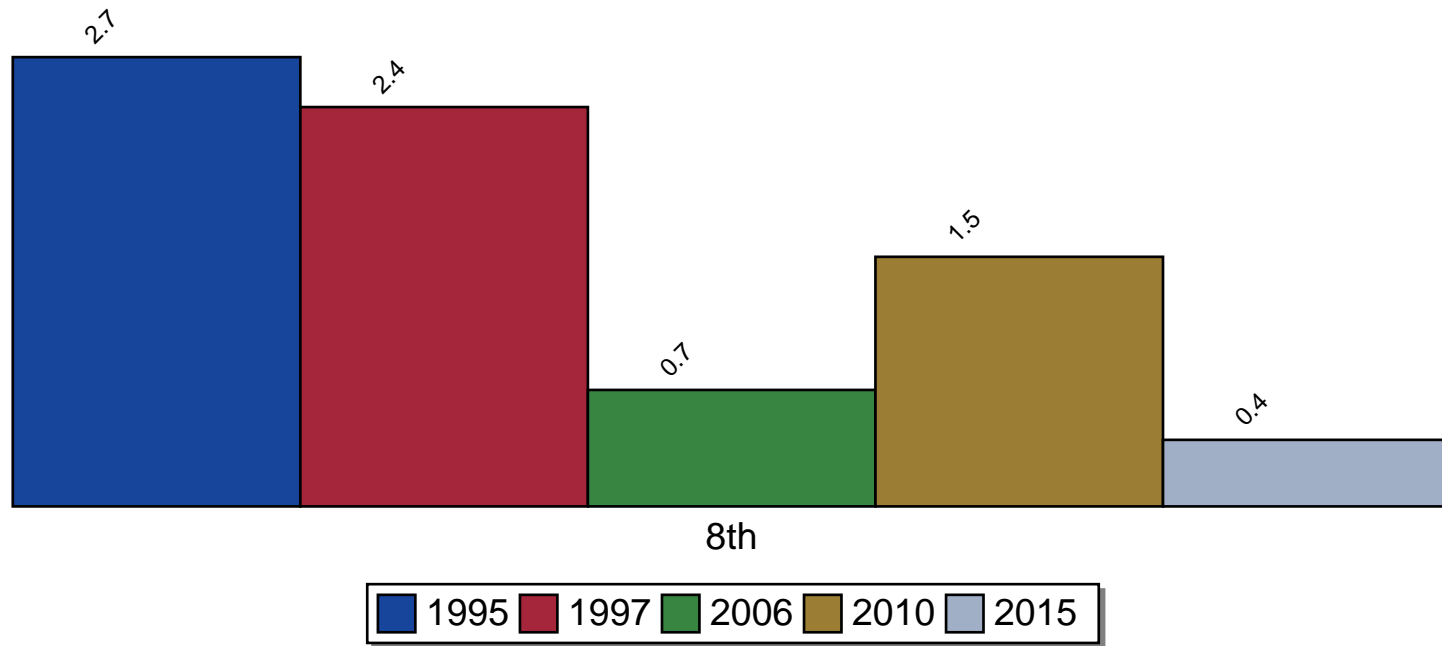


Source: Pride Survey

Figure 5: Annual Use of Marijuana



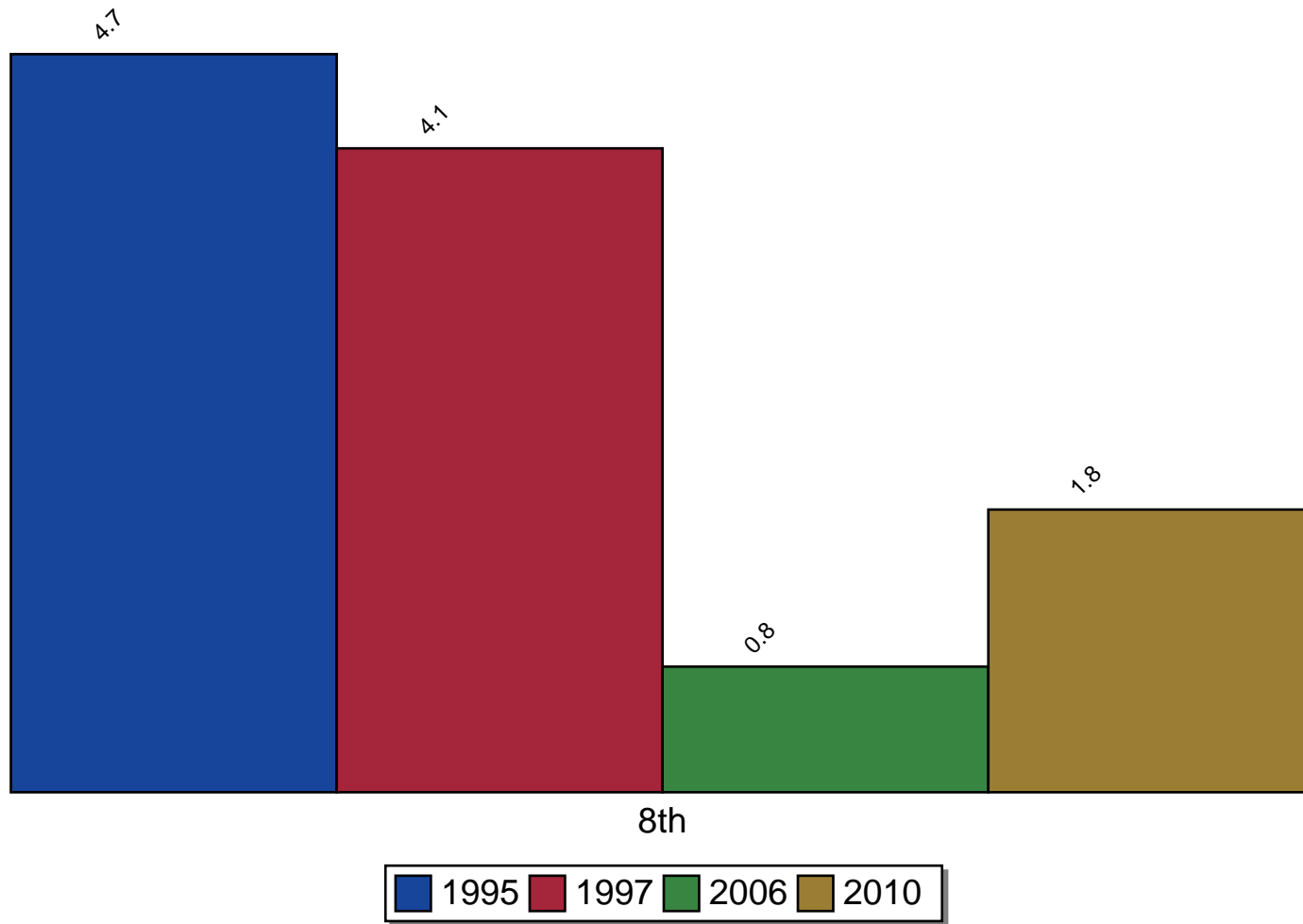
# Annual Use of Cocaine



Source: Pride Survey

Figure 6: Annual Use of Cocaine

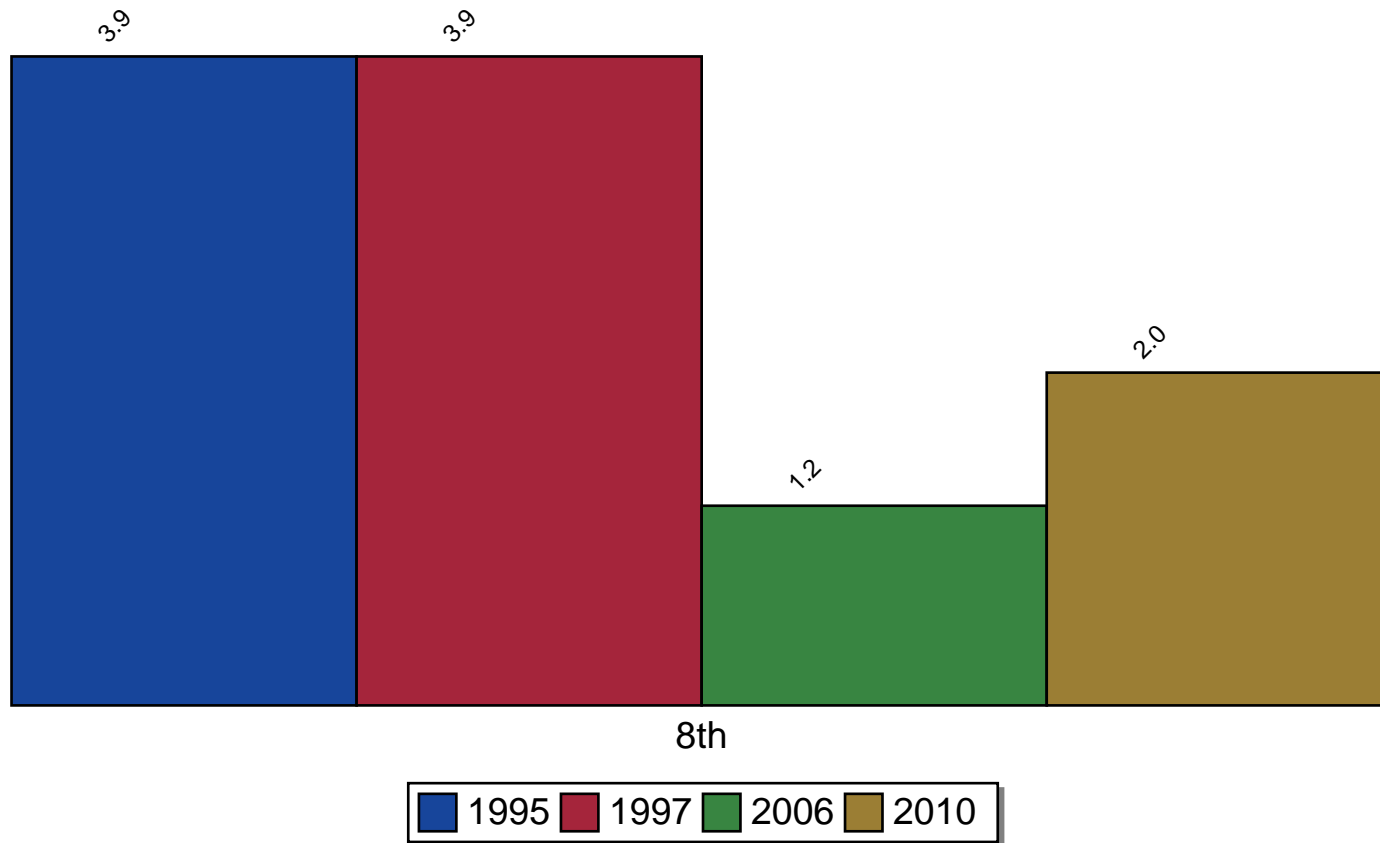
# Annual Use of Uppers



Source: Pride Survey

Figure 7: Annual Use of Uppers

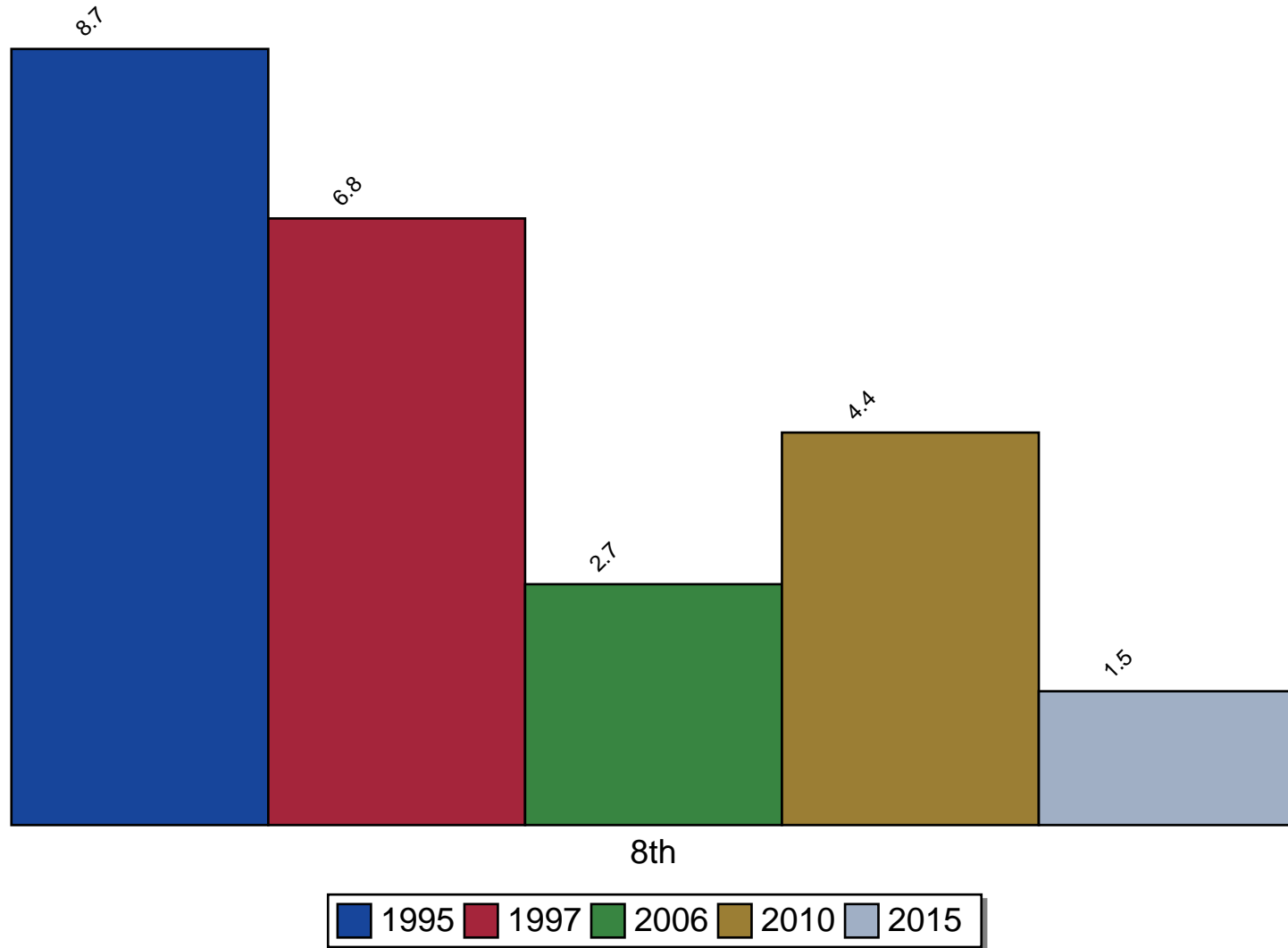
# Annual Use of Downers



Source: Pride Survey

Figure 8: Annual Use of Downers

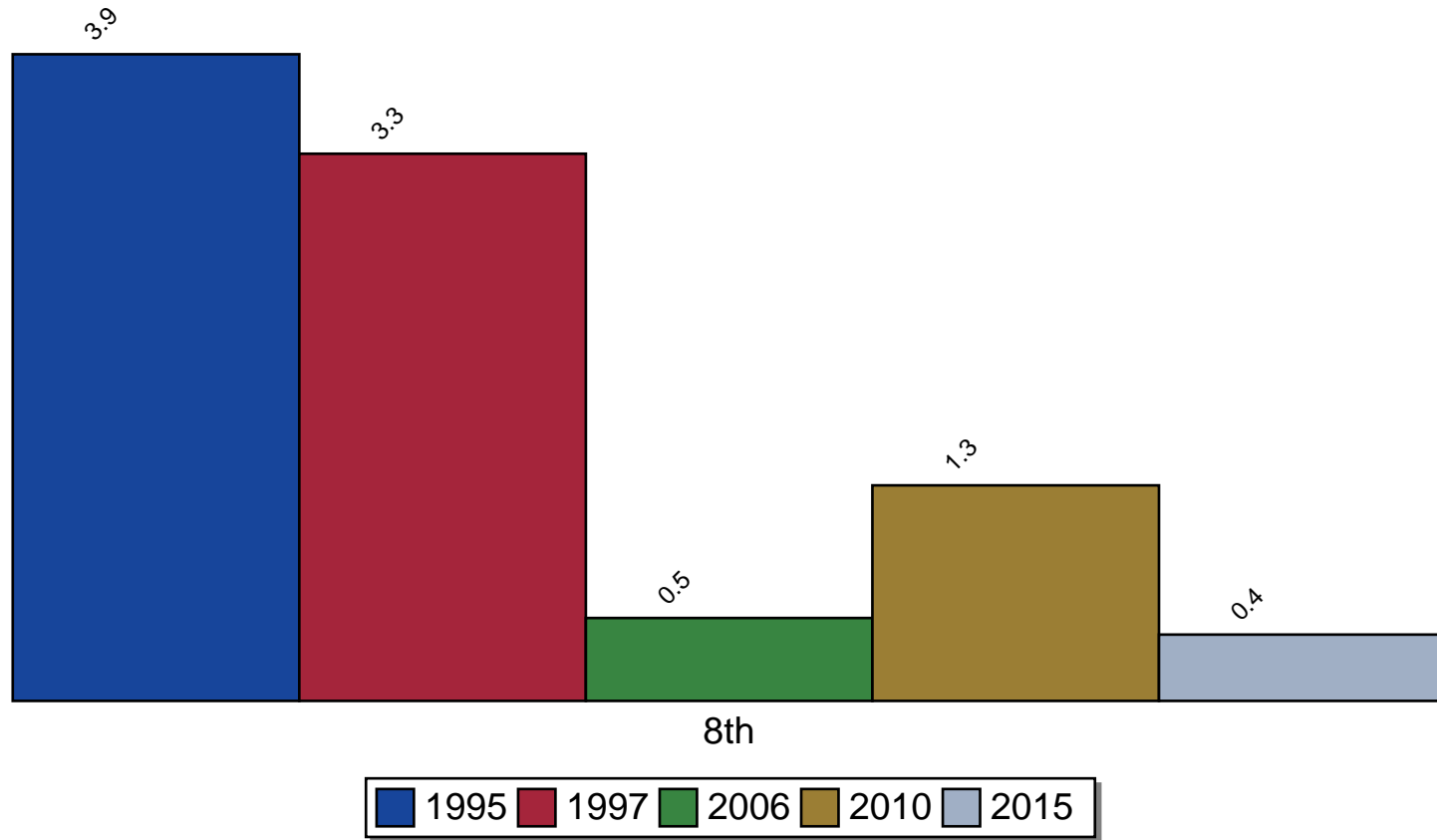
# Annual Use of Inhalants



Source: Pride Survey

Figure 9: Annual Use of Inhalants

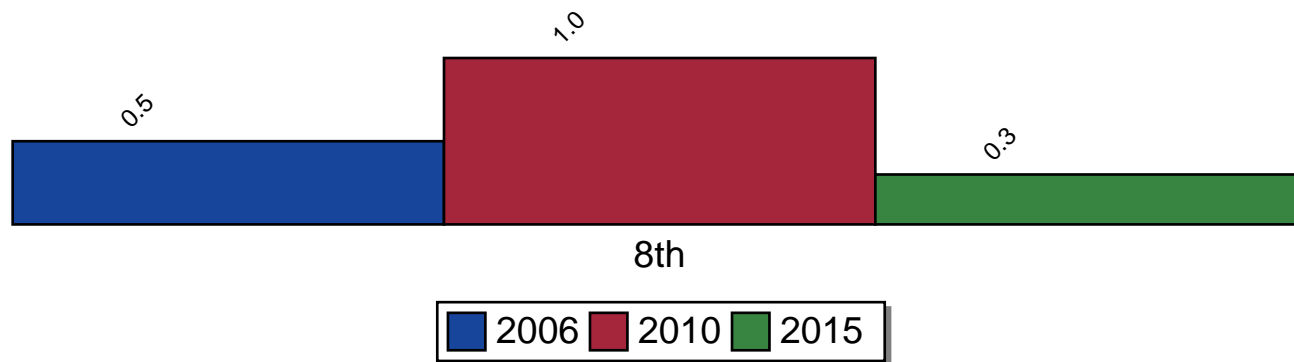
# Annual Use of Hallucinogens



Source: Pride Survey

Figure 10: Annual Use of Hallucinogens

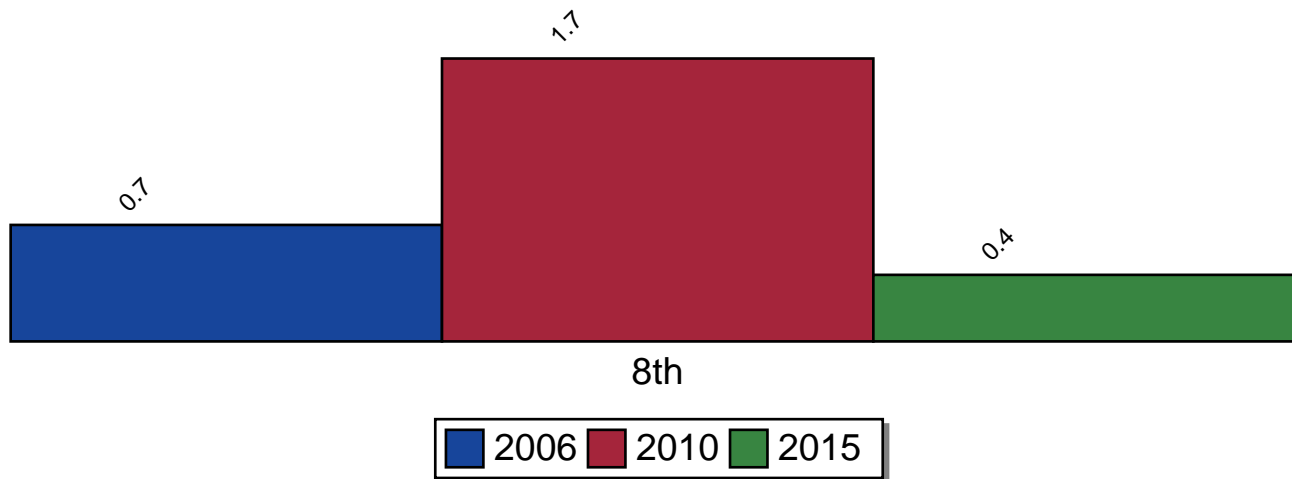
# Annual Use of Heroin



Source: Pride Survey

Figure 11: Annual Use of Heroin

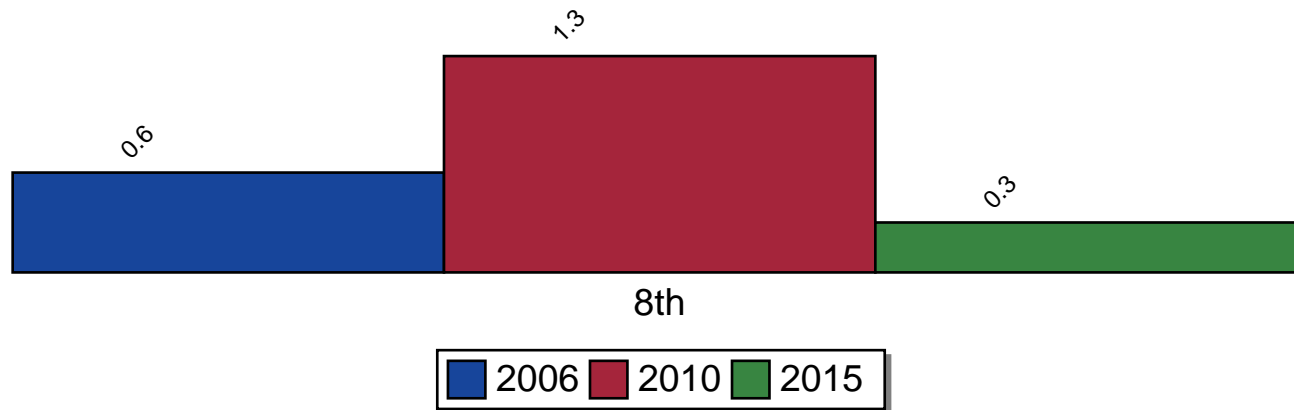
# Annual Use of Steroids



Source: Pride Survey

Figure 12: Annual Use of Steroids

# Annual Use of Ecstasy

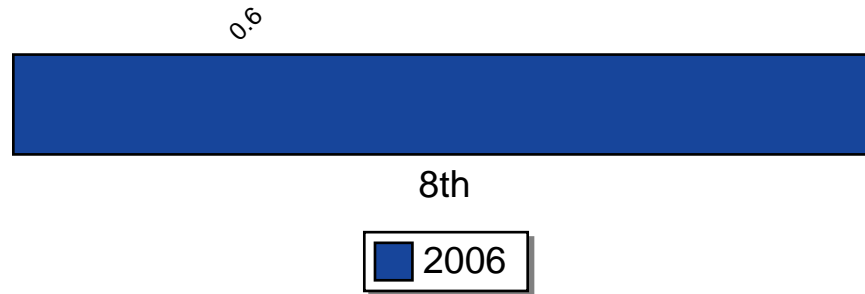


Source: Pride Survey

Figure 13: Annual Use of Ecstasy



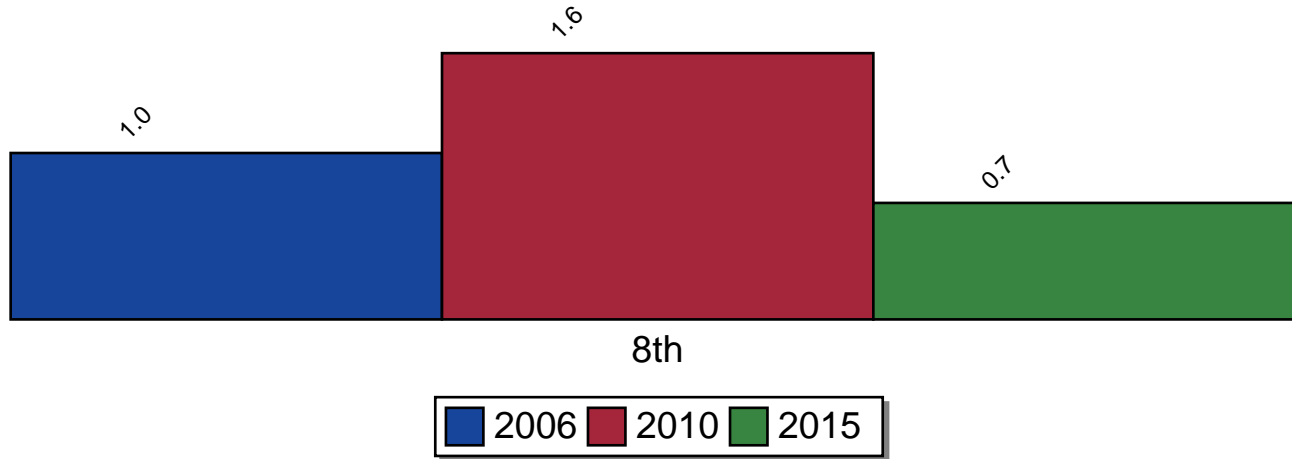
# Annual Use of OxyContin



Source: Pride Survey

Figure 14: Annual Use of OxyContin

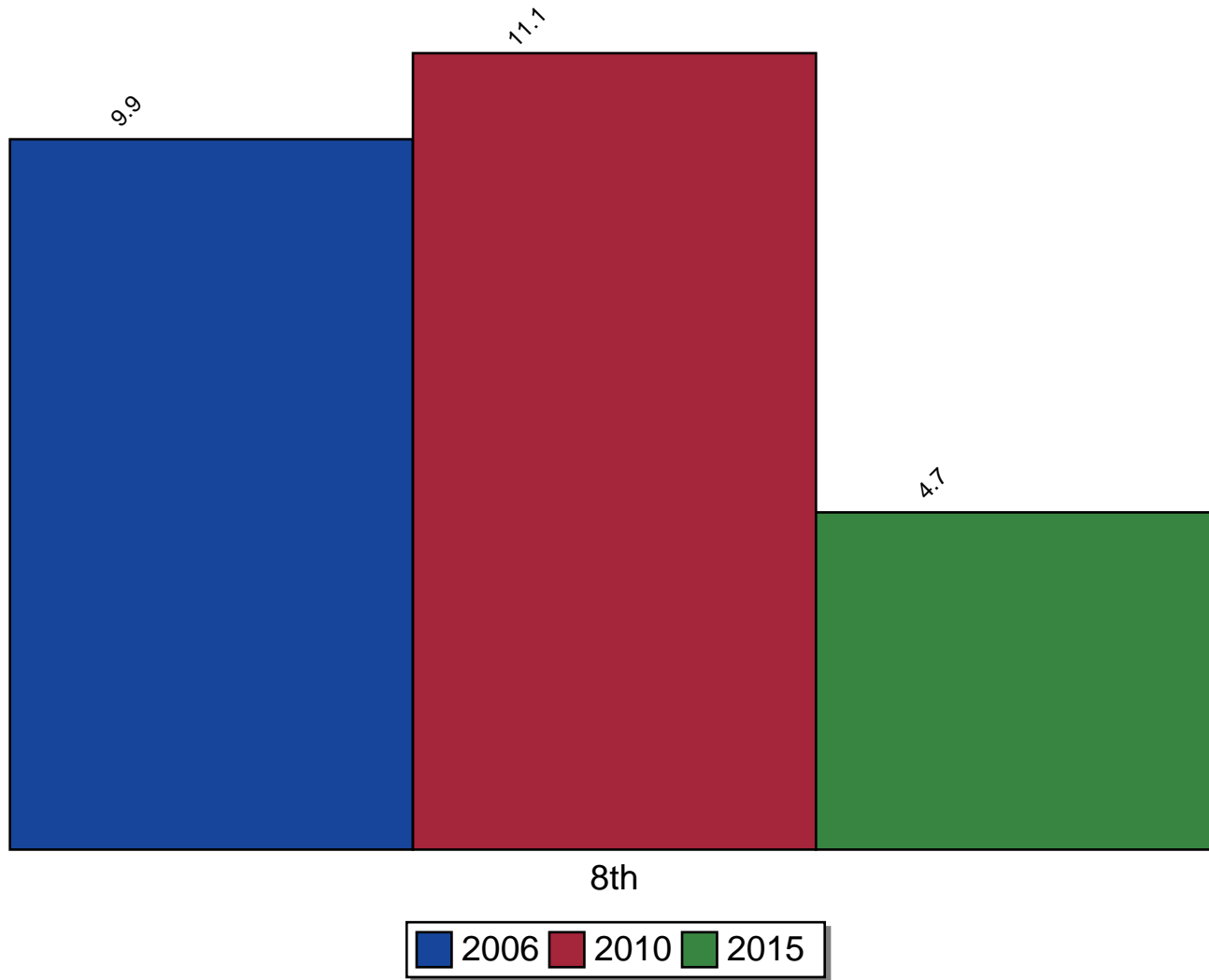
# Annual Use of Meth



Source: Pride Survey

Figure 15: Annual Use of Meth

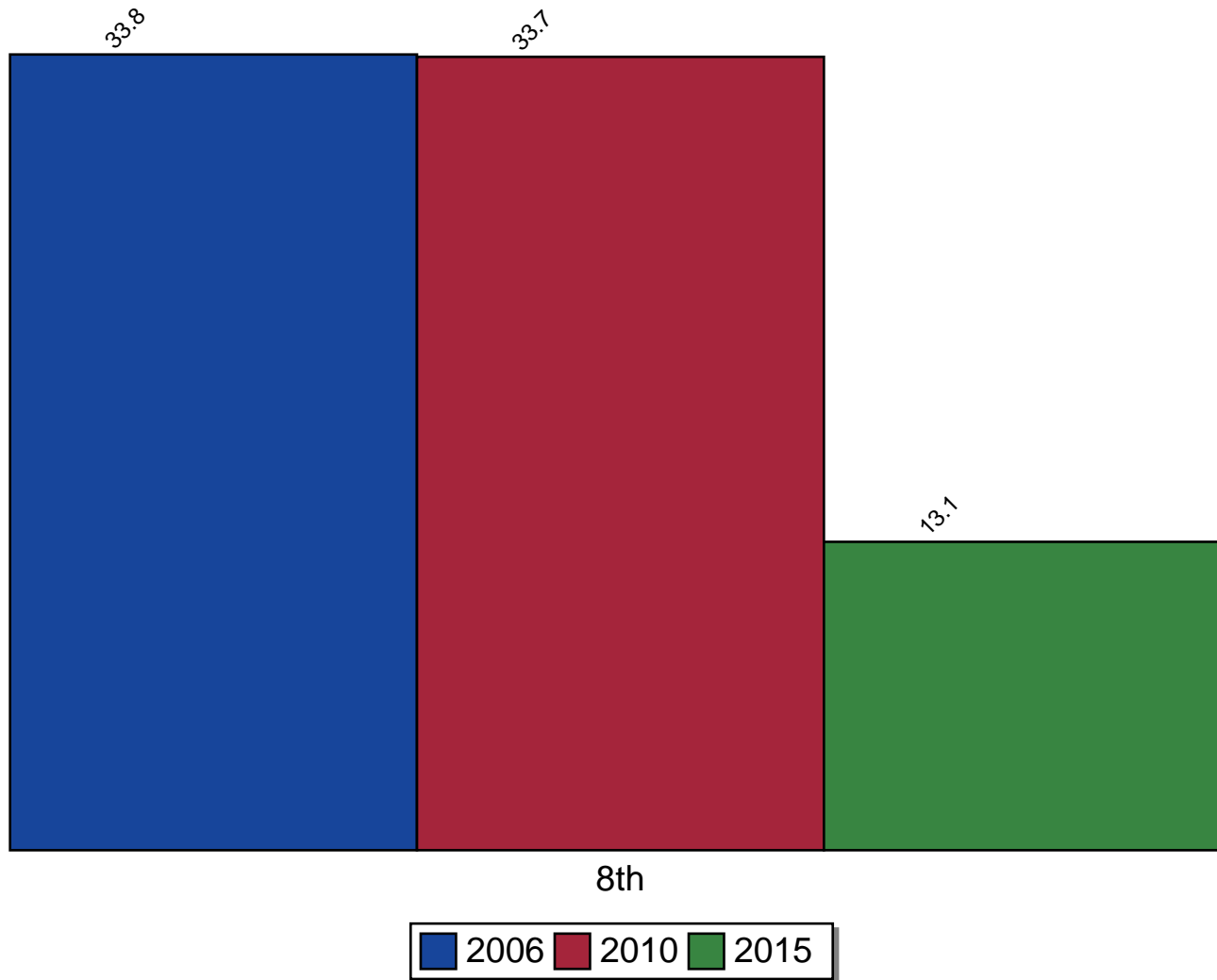
# Annual Use of Tobacco



Source: Pride Survey

Figure 16: Annual Use of Tobacco

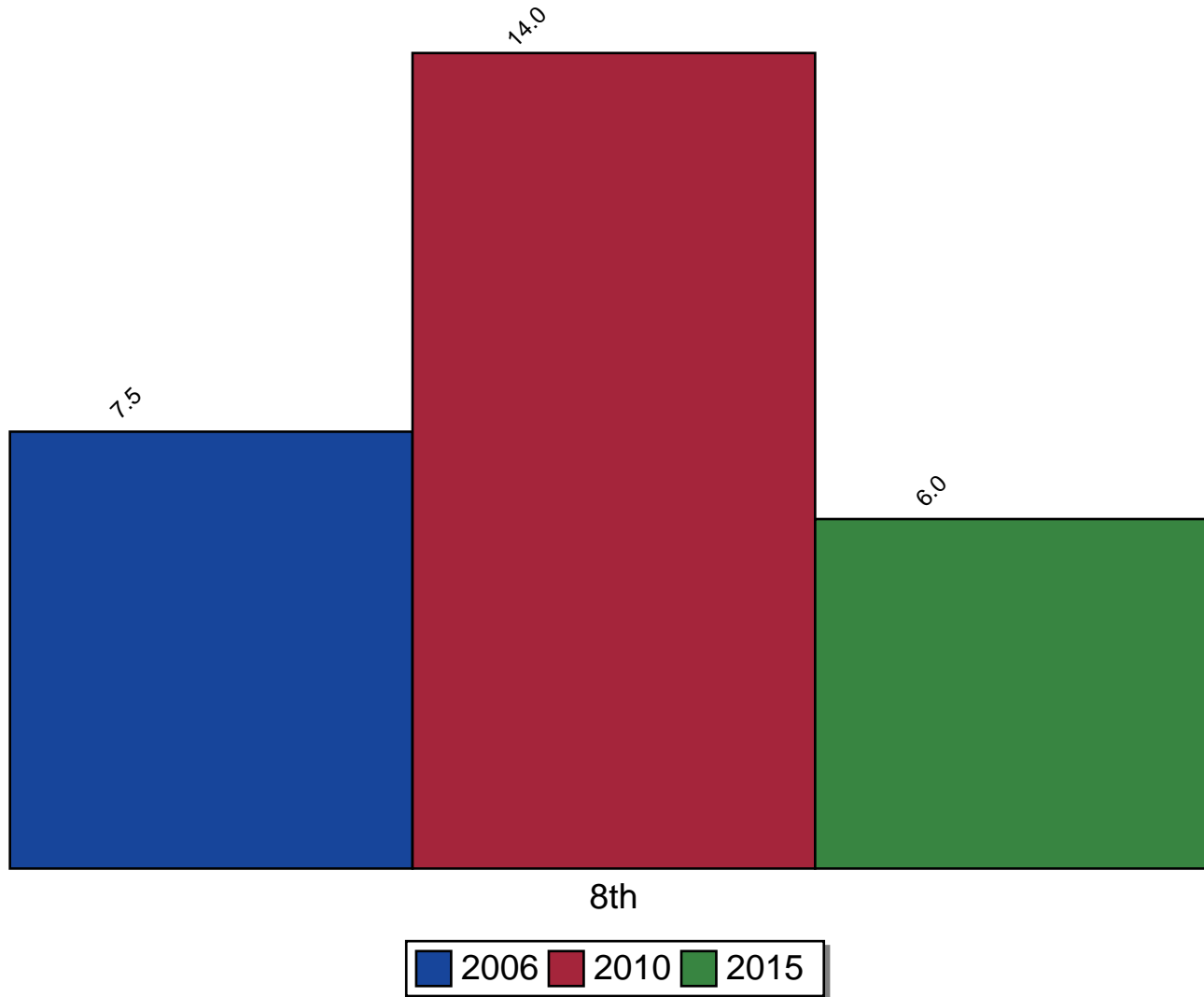
# Annual Use of Alcohol



Source: Pride Survey

Figure 17: Annual Use of Alcohol

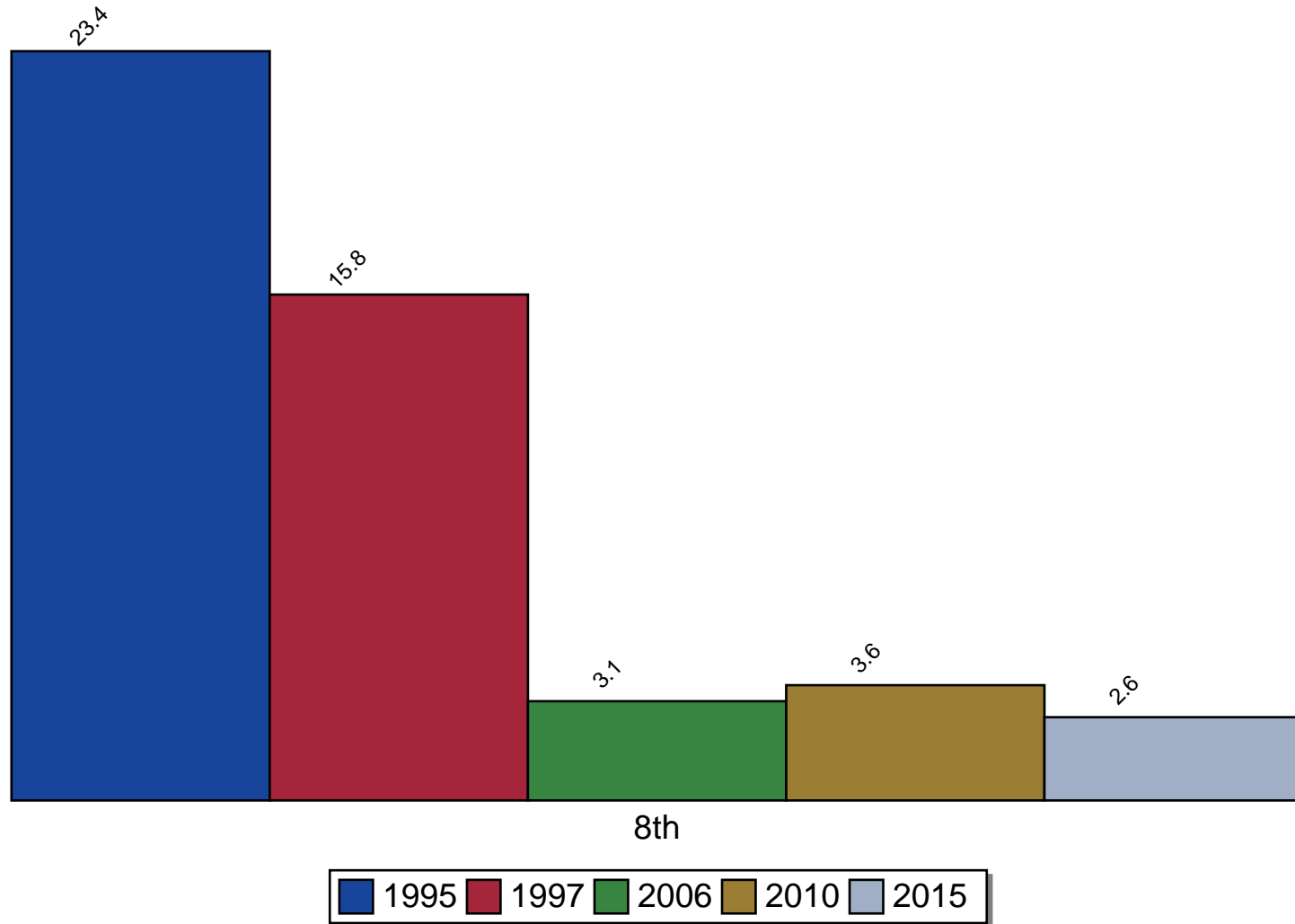
# Annual Use of Illicit Drugs



Source: Pride Survey

Figure 18: Annual Use of Illicit Drugs

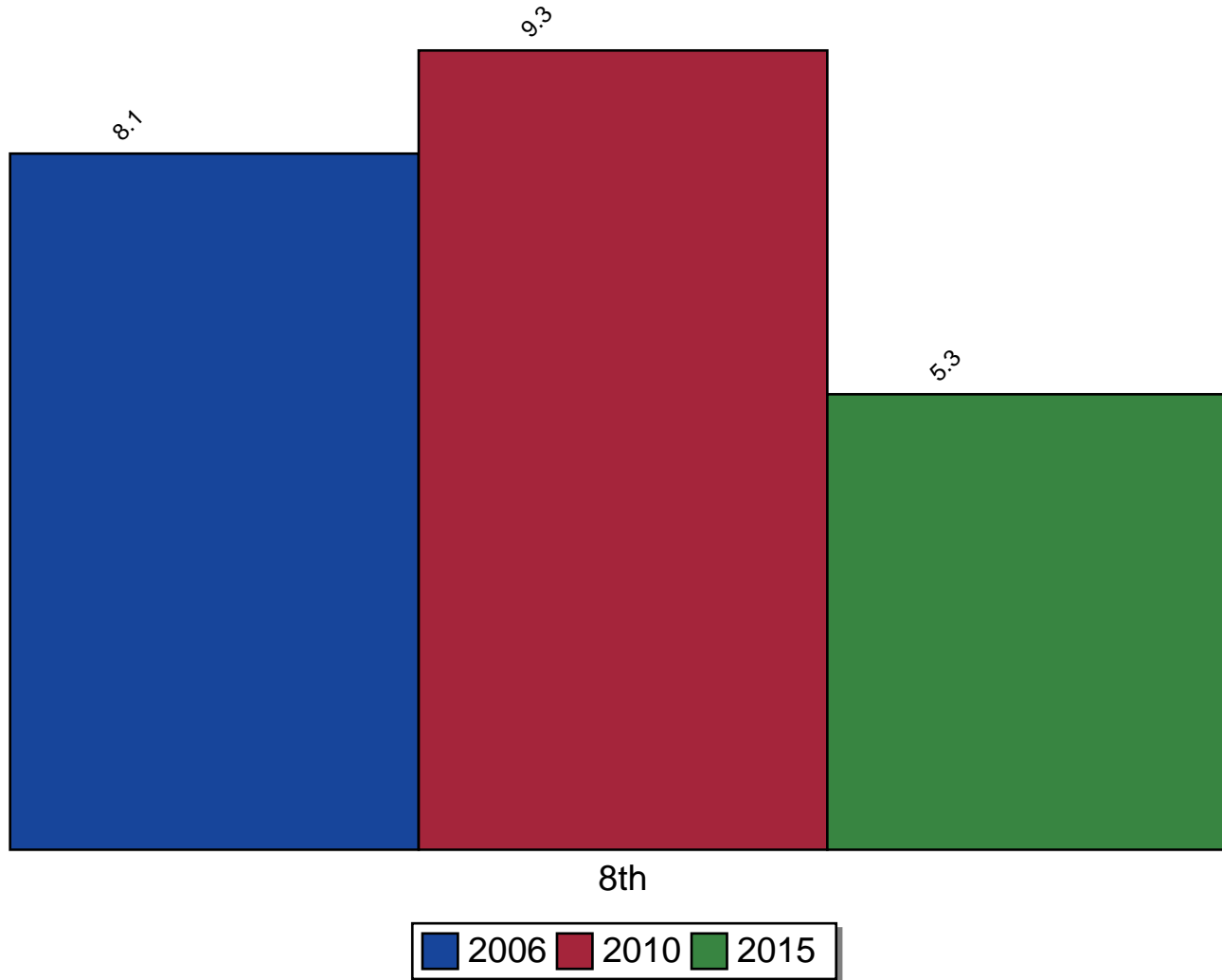
# Monthly Use of Cigarettes



Source: Pride Survey

Figure 19: Monthly Use of Cigarettes

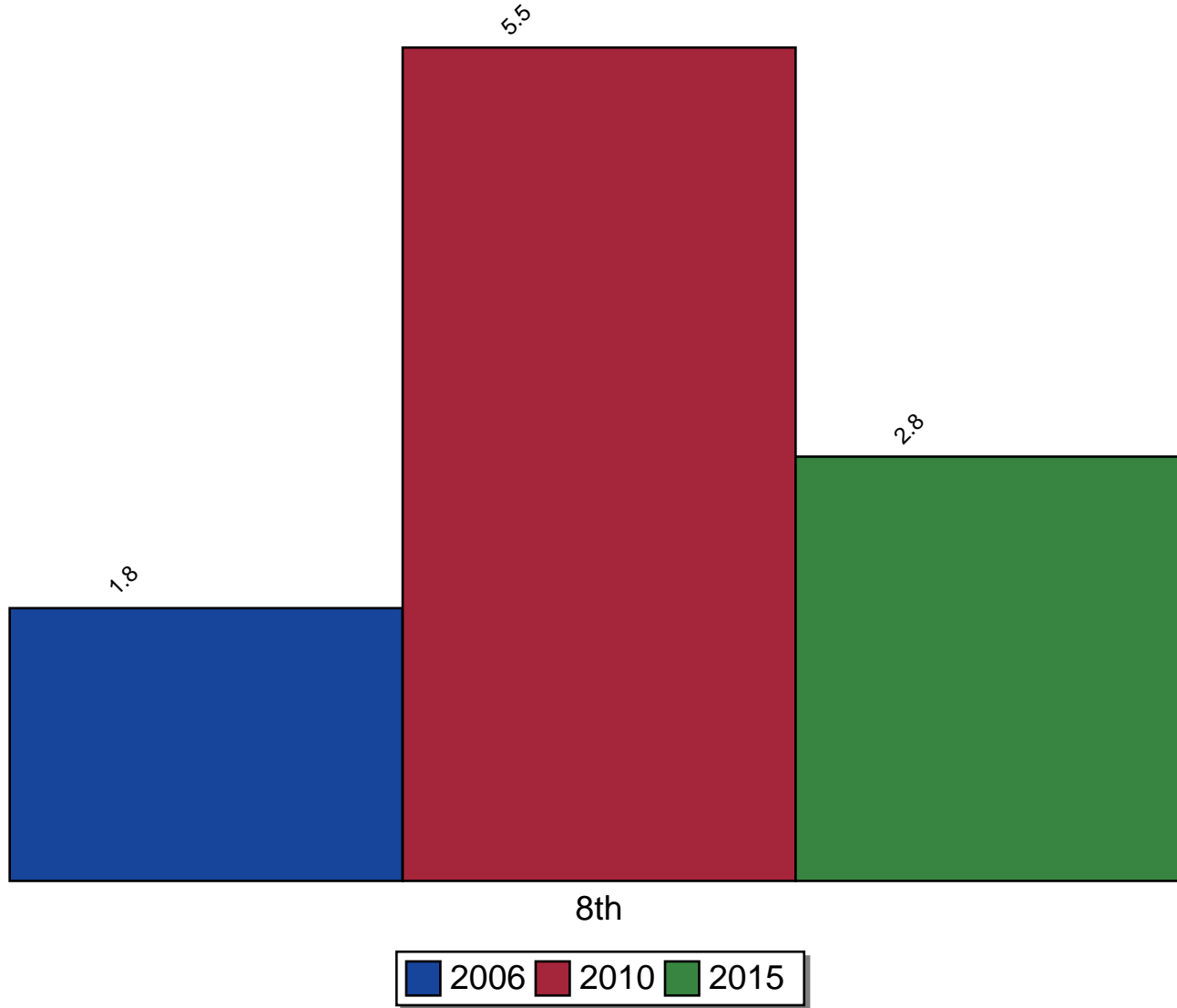
# Monthly Use of Alcohol



Source: Pride Survey

Figure 20: Monthly Use of Alcohol

# Monthly Use of Marijuana

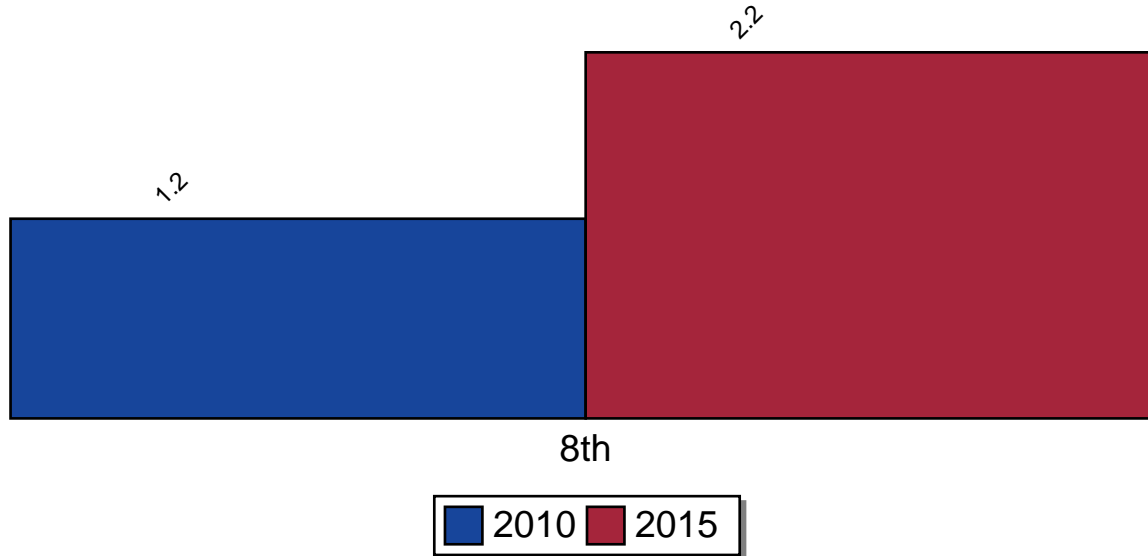


Source: Pride Survey

Figure 21: Monthly Use of Marijuana



# Monthly Use of Presc Drugs



Source: Pride Survey

Figure 22: Monthly Use of Presc Drugs

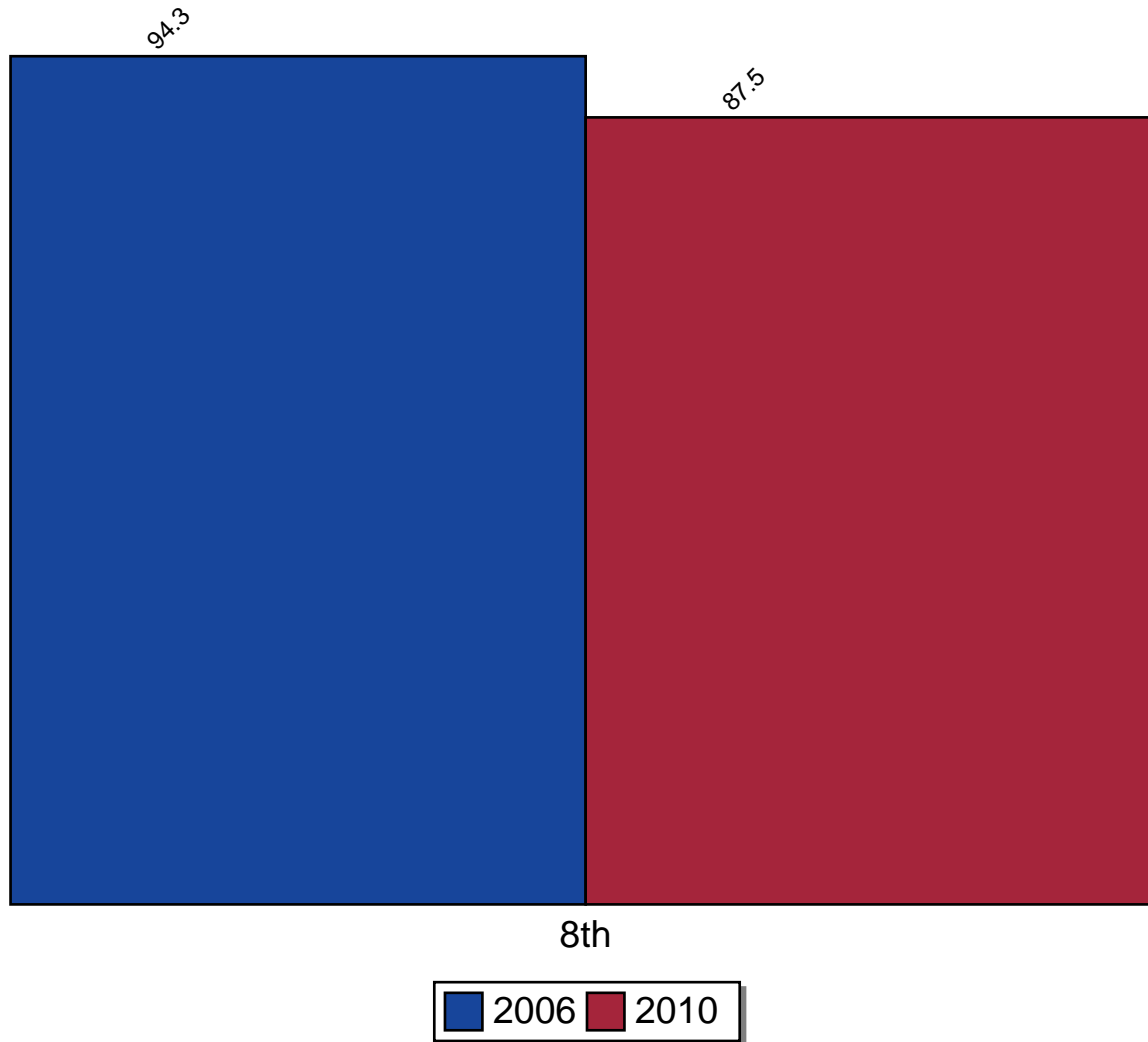
## 2 Perceived Risk of Use

Before the 2012-13 school year, this section was called *Perceived Harmfulness of Use*. Questions were of the form *Do you feel the following are harmful to your health?* followed by a list of drugs with the possible responses being *No Harm, Some Harm, Harmful* and *Very Harmful*. The perception of harmfulness percentage was calculated by combining the percentage figures for *Harmful* and *Very Harmful* together. These questions, with these response categories, were considered acceptable for reporting purposes for clients with a Drug-Free Communities (DFC) Support Program Grant.

Starting in the 2012-13 school year, new and stricter DFC guidelines require that changes be made in wording to both the questions and the responses in order to be acceptable for DFC reporting purposes. For example, rather than asking students whether they felt alcohol was harmful to their health, the new guidelines require that students be asked specifically *How much do you think people risk harming themselves physically or in other ways if they have five or more drinks of an alcoholic beverage once or twice a week?* with the possible responses being *No Risk, Slight Risk, Moderate Risk* and *Great Risk*. The percentage figures for *Moderate Risk* and *Great Risk* are combined for DFC reporting.

Because of these required changes and due to the more specific nature and wording of the questions, data starting in the 2012-13 school year may show a somewhat different pattern of results than that seen in prior years. The graphs for the drug categories of smokeless tobacco, cigars, beer, coolers and liquor will eventually be removed from this section as questions on this topic for these drug categories will no longer be asked.

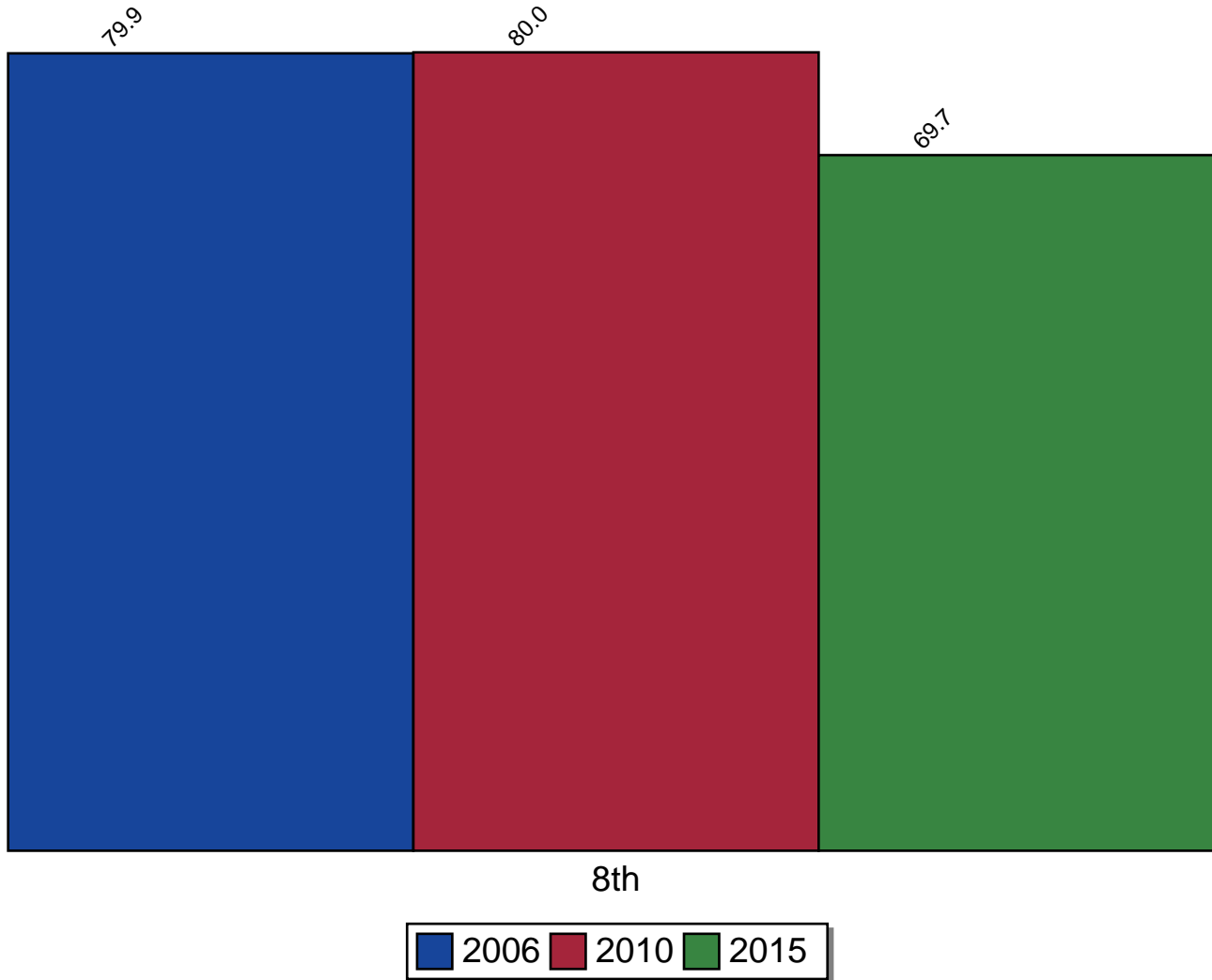
# Perceived Risk of Use of Tobacco



Source: Pride Survey

Figure 23: Perceived Risk of Use of Tobacco

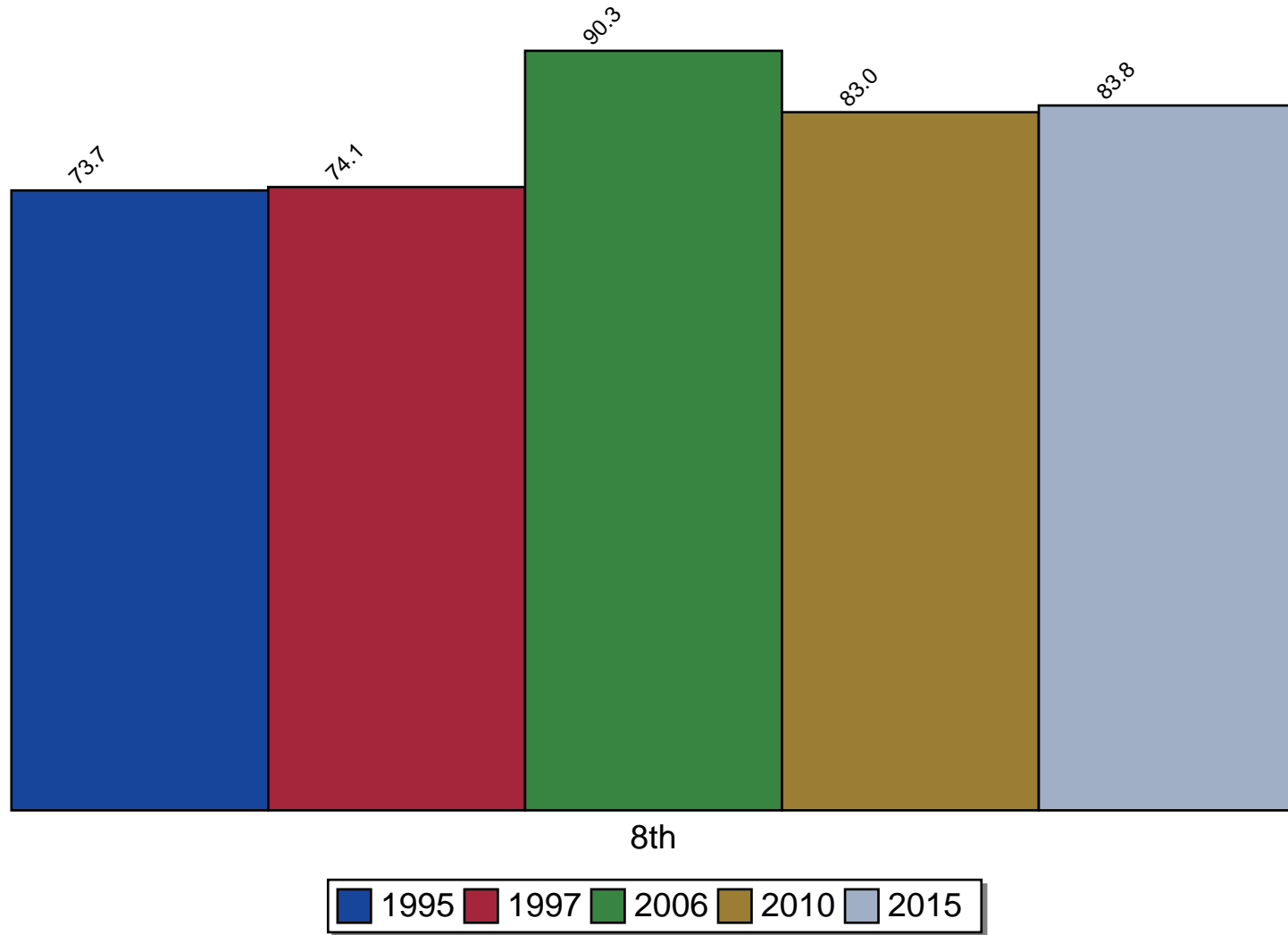
# Perceived Risk of Use of Alcohol



Source: Pride Survey

Figure 24: Perceived Risk of Use of Alcohol

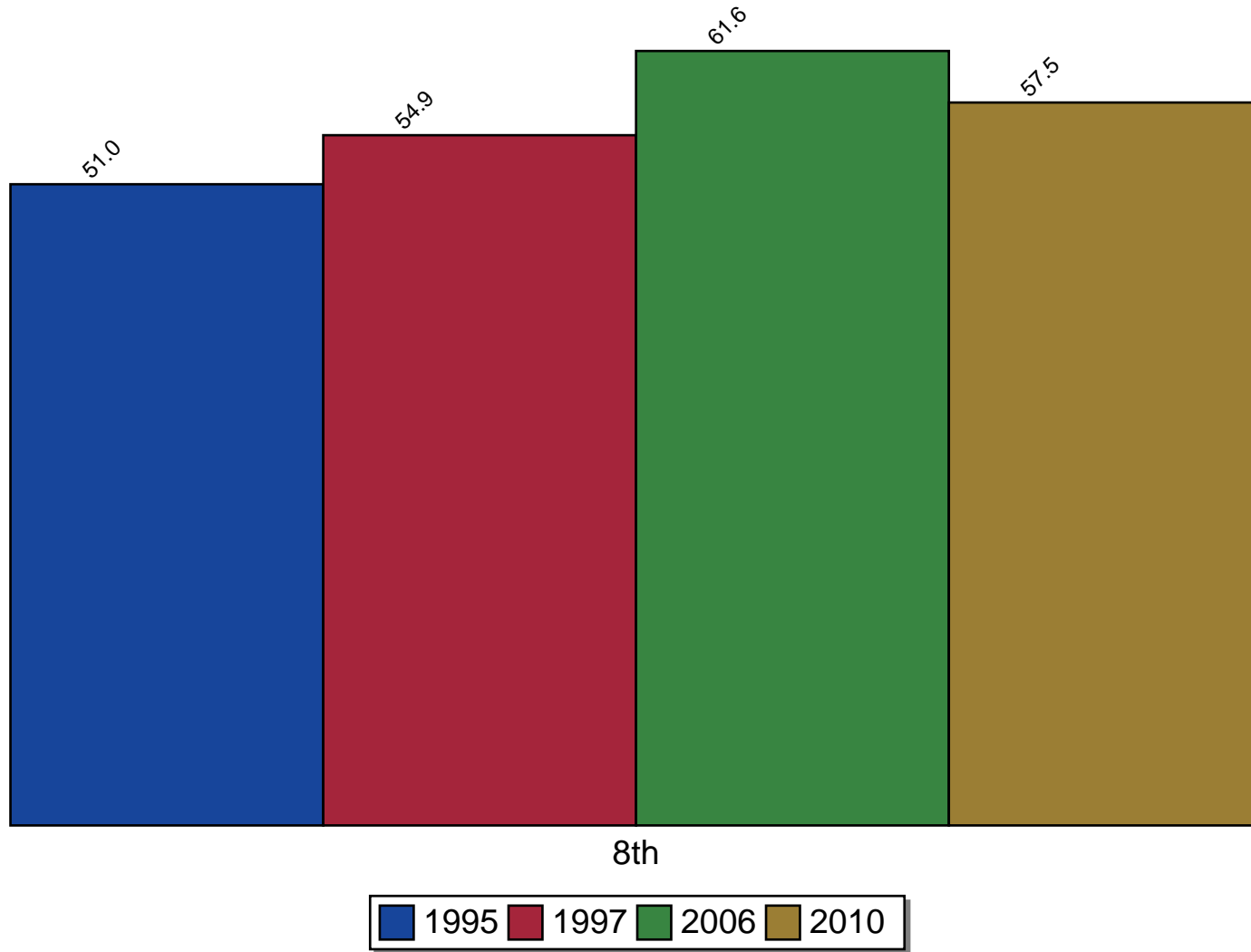
# Perceived Risk of Use of Cigarettes



Source: Pride Survey

Figure 25: Perceived Risk of Use of Cigarettes

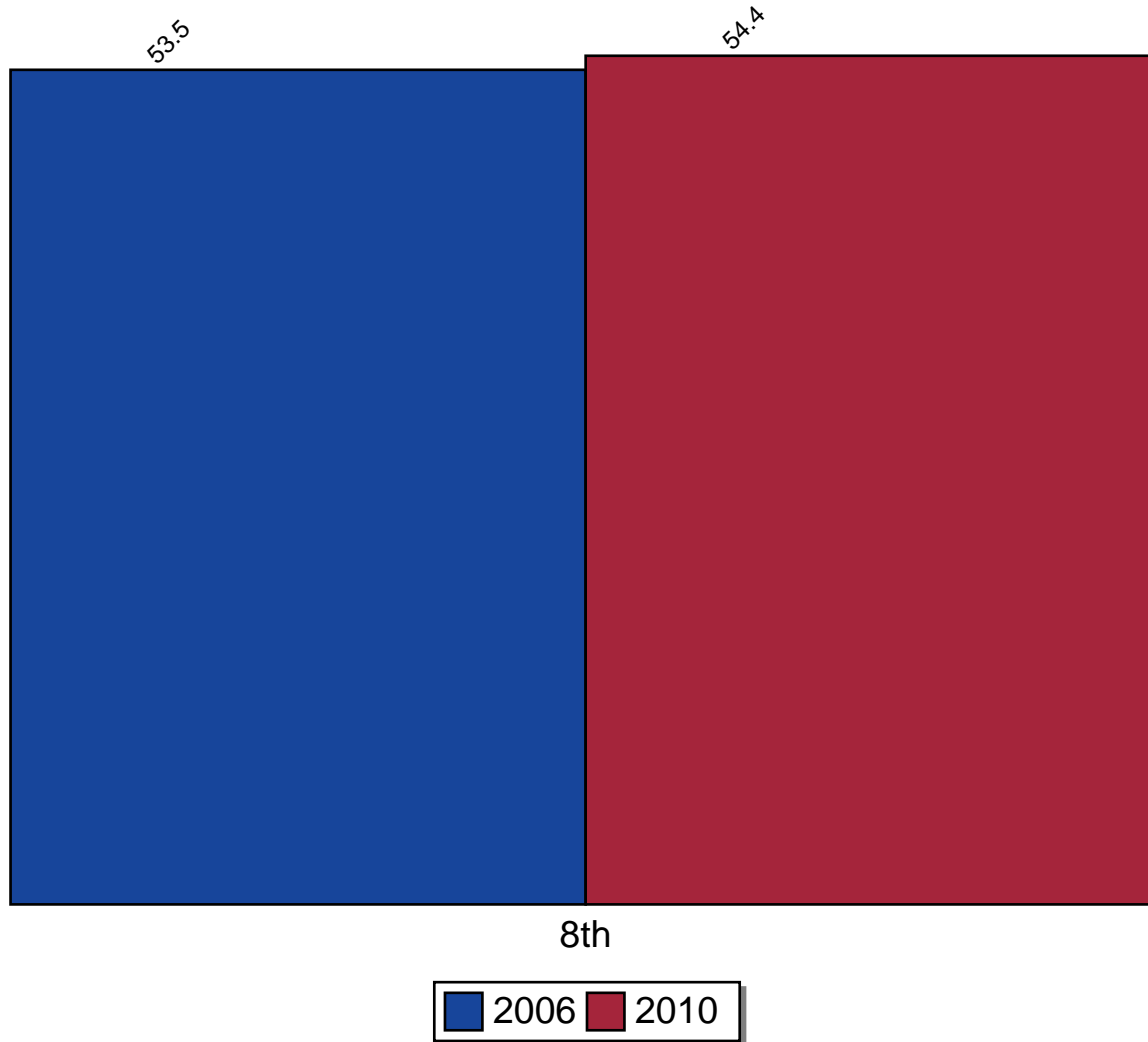
# Perceived Risk of Use of Beer



Source: Pride Survey

Figure 26: Perceived Risk of Use of Beer

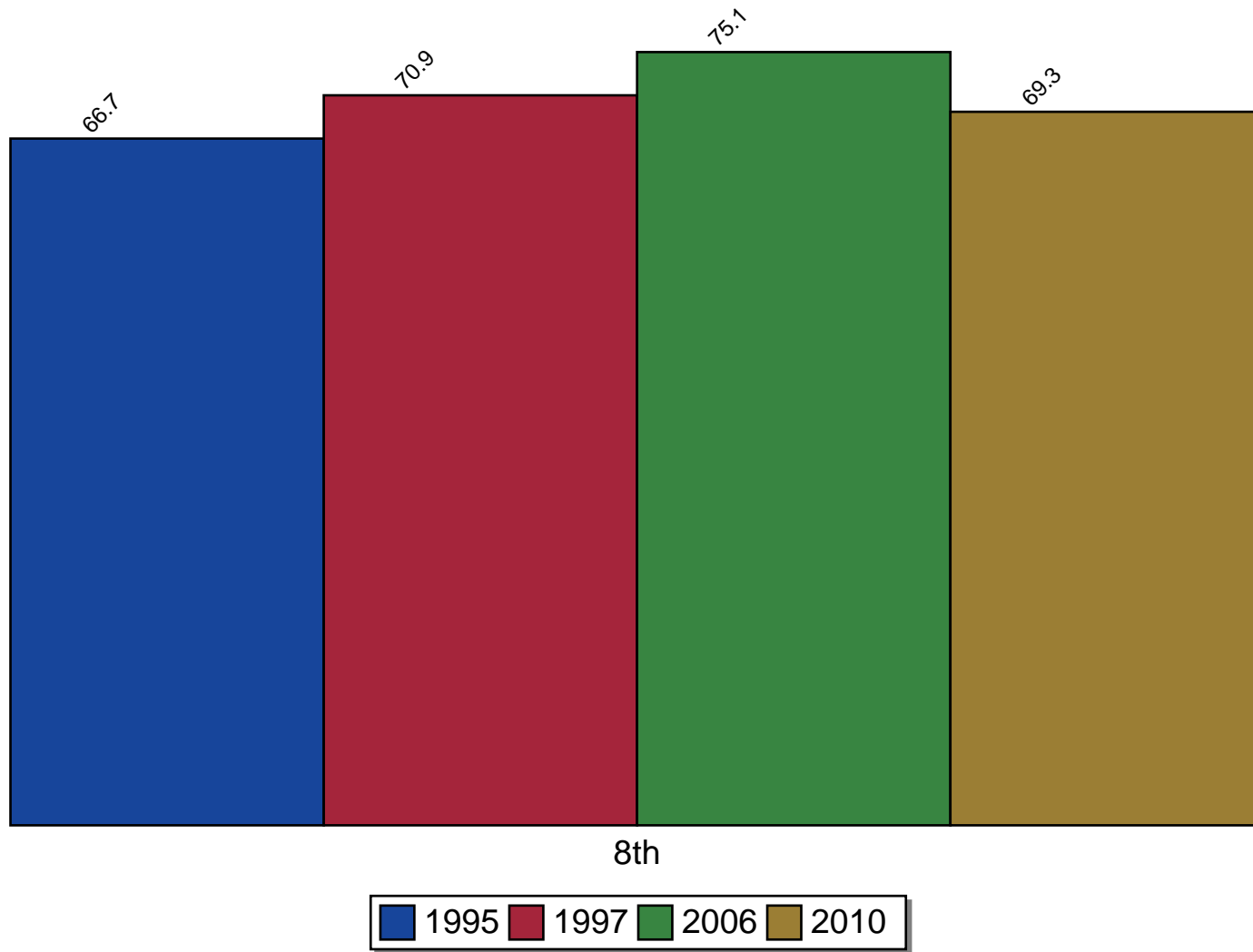
# Perceived Risk of Use of Wine Coolers



Source: Pride Survey

Figure 27: Perceived Risk of Use of Wine Coolers

# Perceived Risk of Use of Liquor

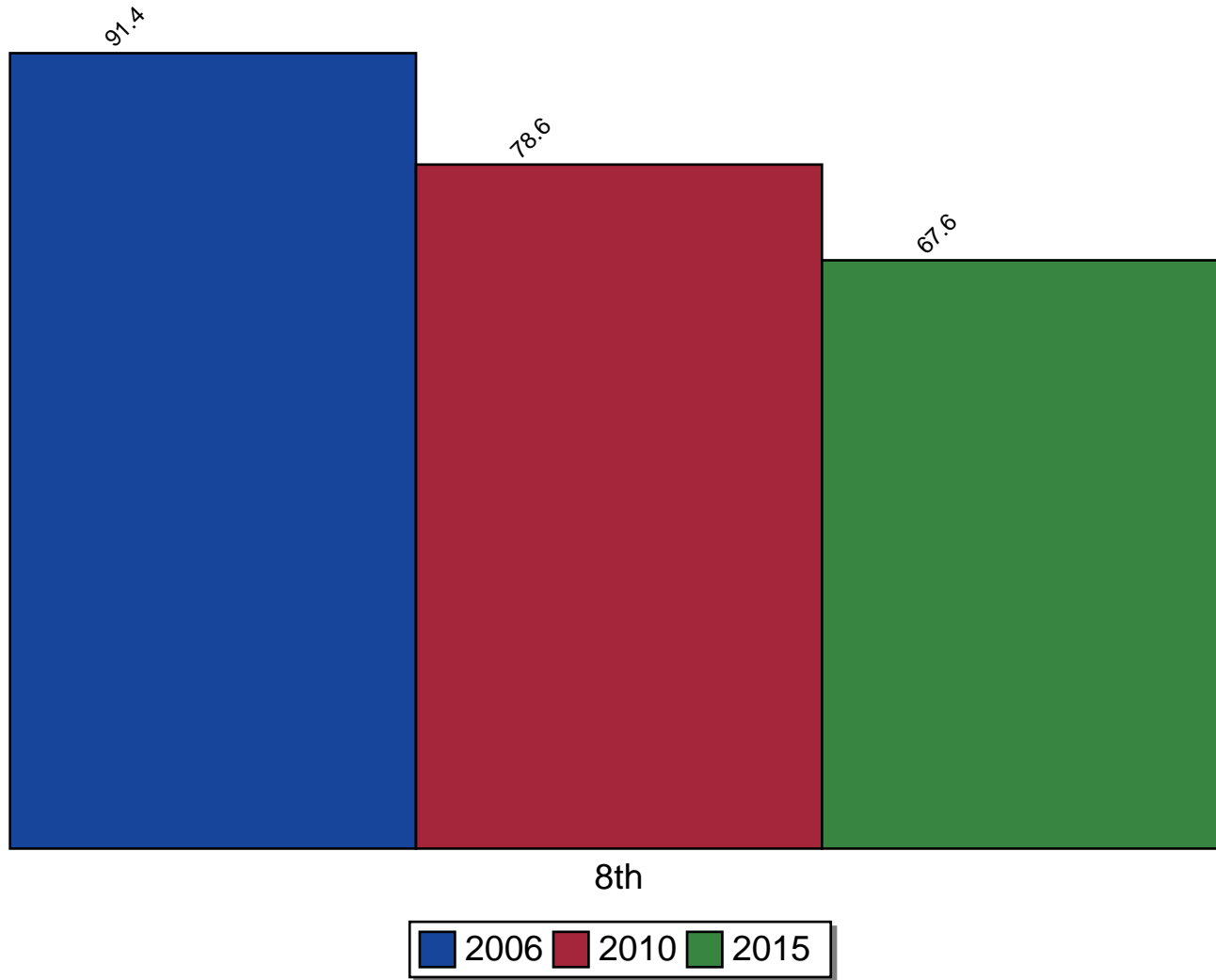


Source: Pride Survey

Figure 28: Perceived Risk of Use of Liquor



# Perceived Risk of Use of Marijuana



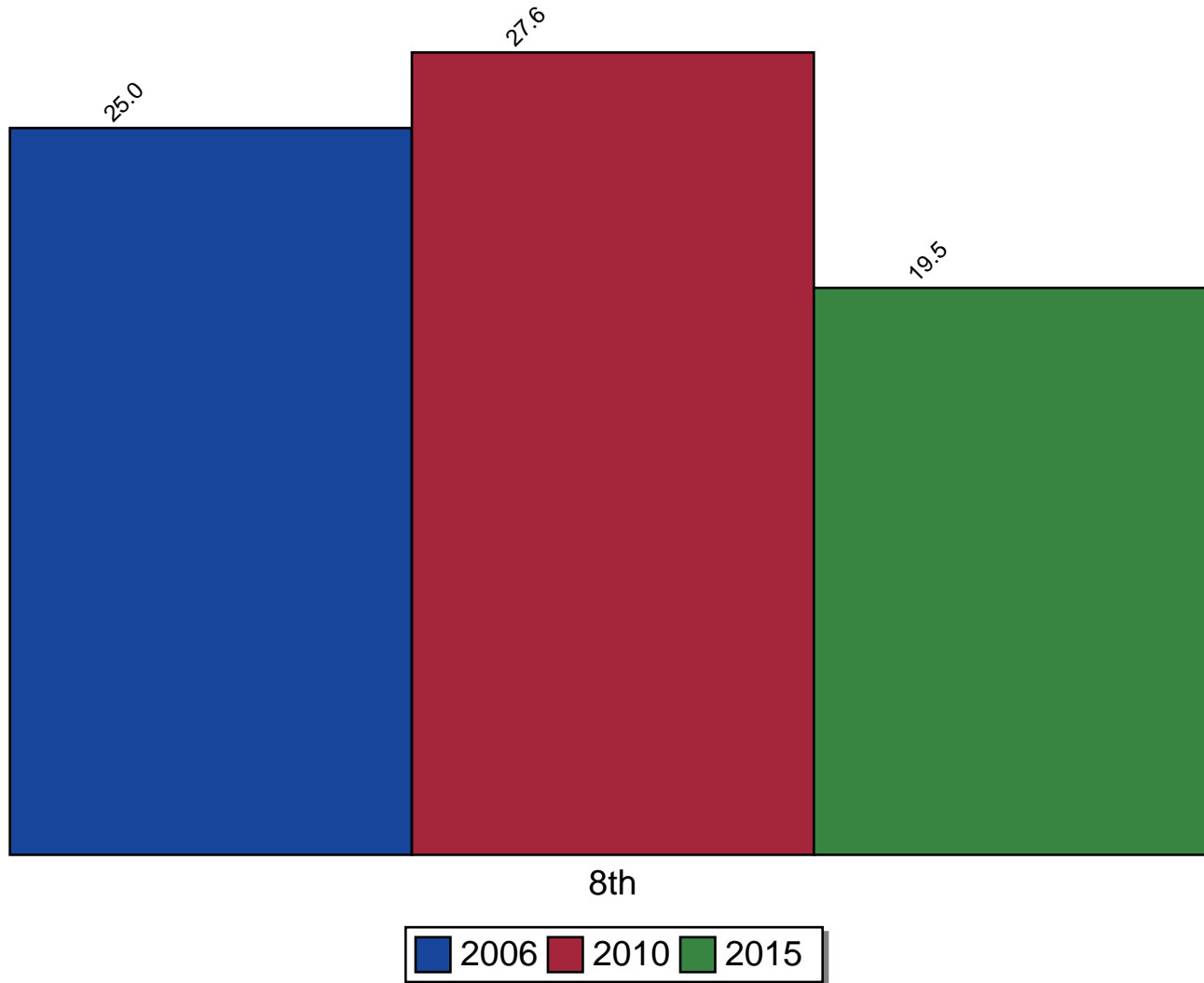
Source: Pride Survey

Figure 29: Perceived Risk of Use of Marijuana

### 3 Availability Across Years

The third set of graphs present data on the availability of drugs. Each graph presents the percent of students who report a drug as being *Fairly Easy* or *Very Easy* to get.

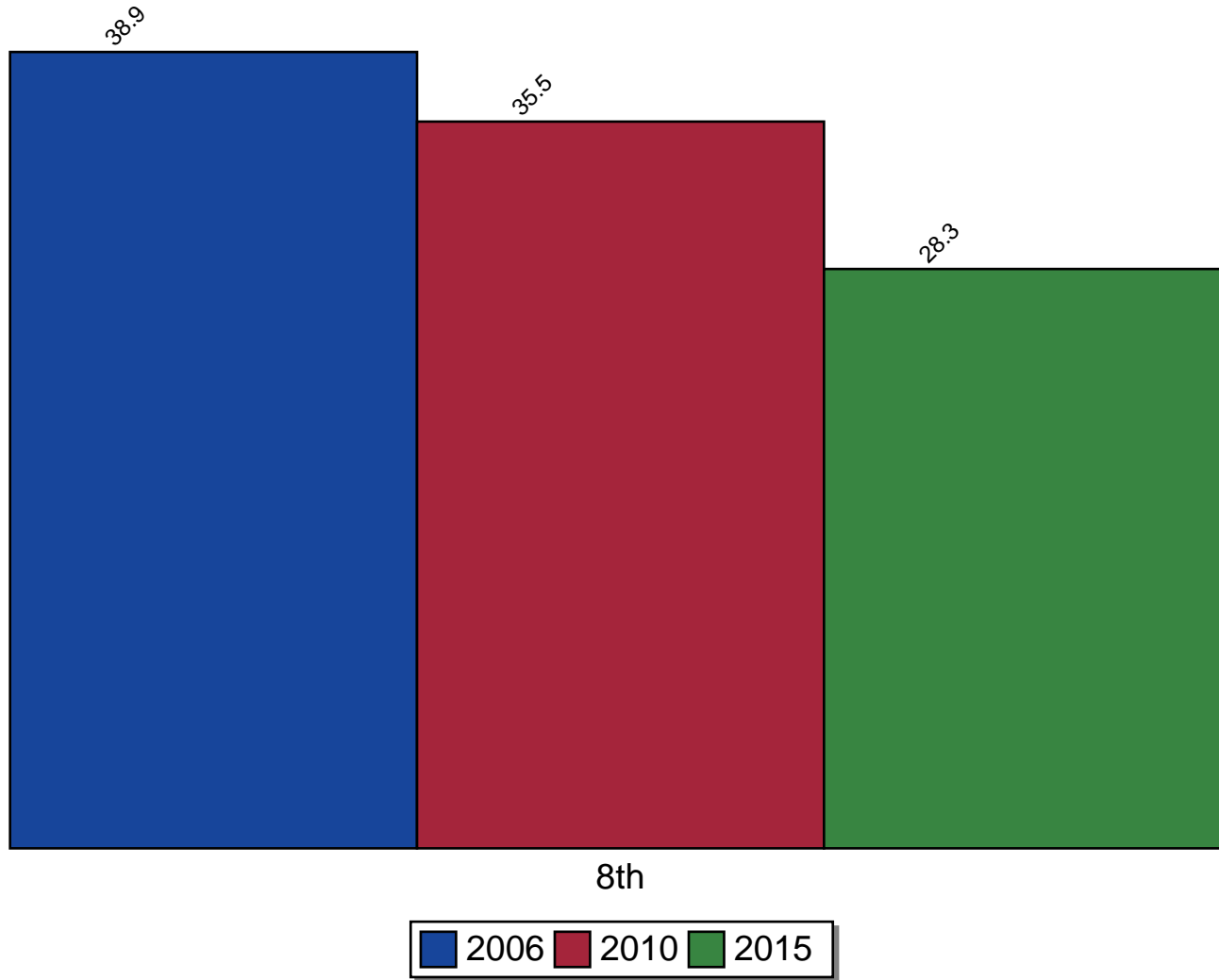
# Availability of Tobacco



Source: Pride Survey

Figure 30: Availability of Tobacco

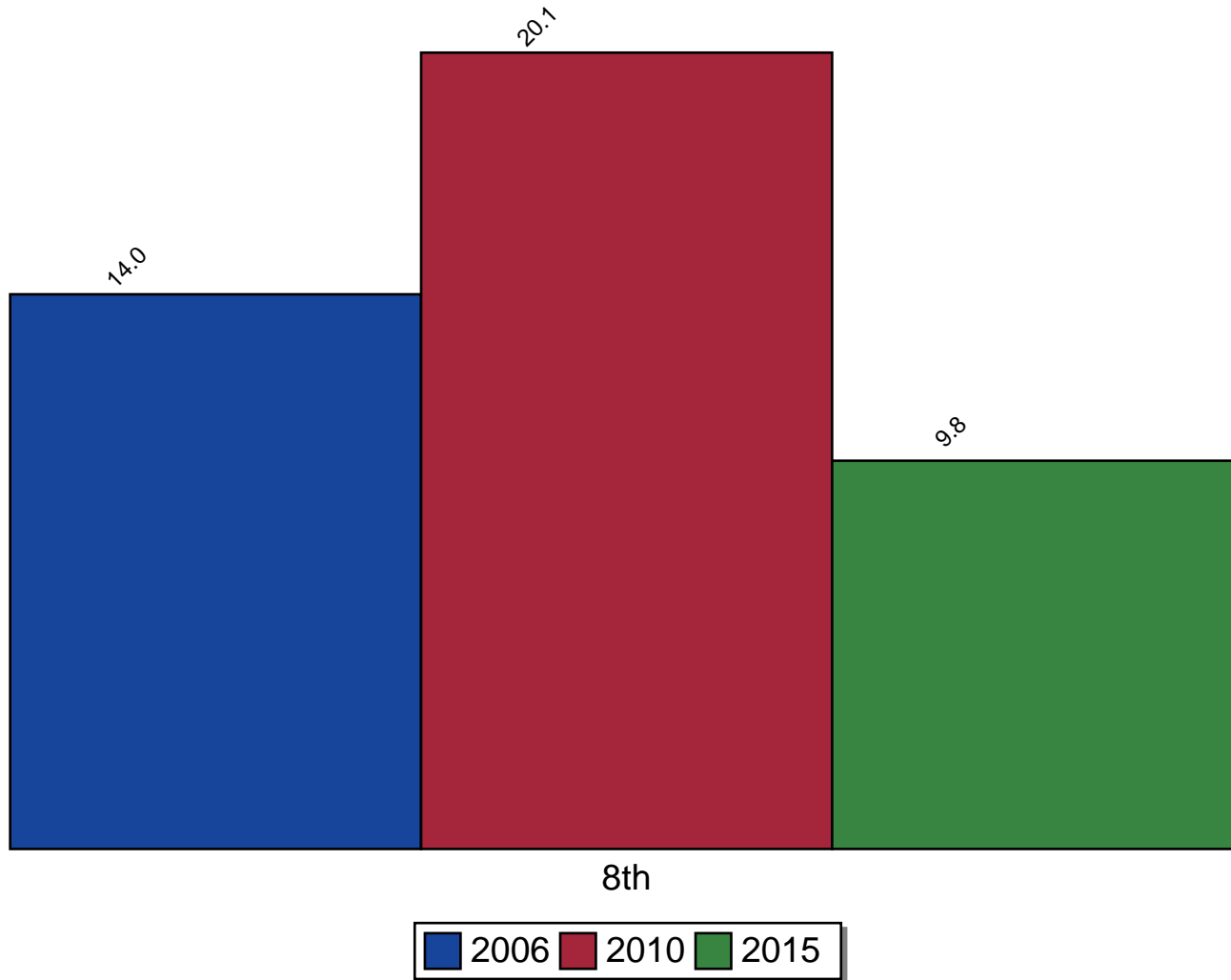
# Availability of Alcohol



Source: Pride Survey

Figure 31: Availability of Alcohol

# Availability of Marijuana



Source: Pride Survey

Figure 32: Availability of Marijuana